

Data subject to change without prior notice  
Edition 03/2020 © 2020 JMG Cranes S.p.A. All rights reserved  
Rev.1 - 03/20



## Electric Pick & Carry Cranes

### JMG Cranes S.p.A.

Sales & Service Office

Via Bergamo, 142

26100 Cremona - Italy

t +39 0372 1786738

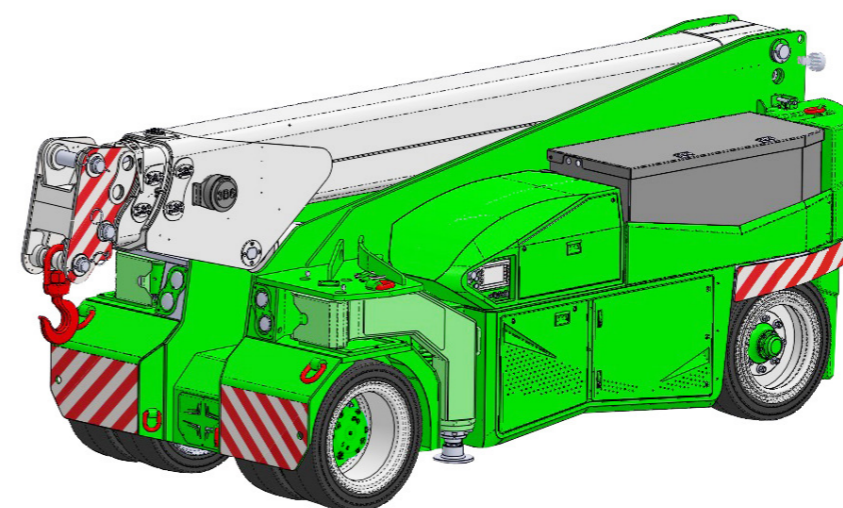
Production Plant

Via Sito Nuovo 14

29010 Sarmato (PC) - Italy

t +39 0523 8486

e info@jmgcranes.com



**MC 180S (inch)**  
Max Capacity 39,600 lbs

[www.jmgcranes.com](http://www.jmgcranes.com)



# MC 180S

RADIO-REMOTE CONTROL ON DRIVING, STEERING, BOOM MOVEMENTS, WINCH AND OTHER ACCESSORIES

FRONT-WHEELS DRIVE WITH COUNTER ROTATION

REMOVABLE COUNTERWEIGHTS

HYDRAULICALLY TELESCOPING PROPORTIONAL TYPE BOOM

FRONT COMPASS TYPE OUTRIGGERS

### Options :

- HYDRAULIC WINCH
- HYDRAULIC JIB WITH HYDRAULIC EXTENSION
- BENDABLE MANUAL JIB WITH MANUAL EXTENSION
- NON-MARKING TIRES
- HYDRAULIC FORKS
- MAN BUCKET
- ATEX CONVERSIONS
- CUSTOMIZED PAINTING

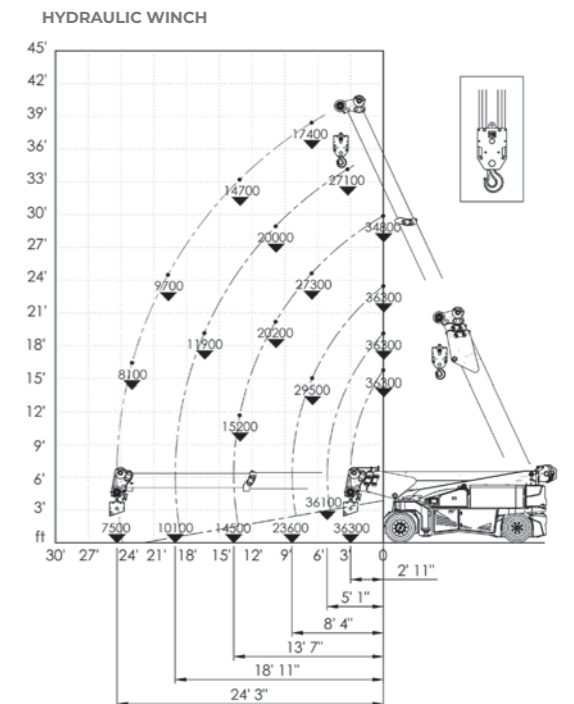
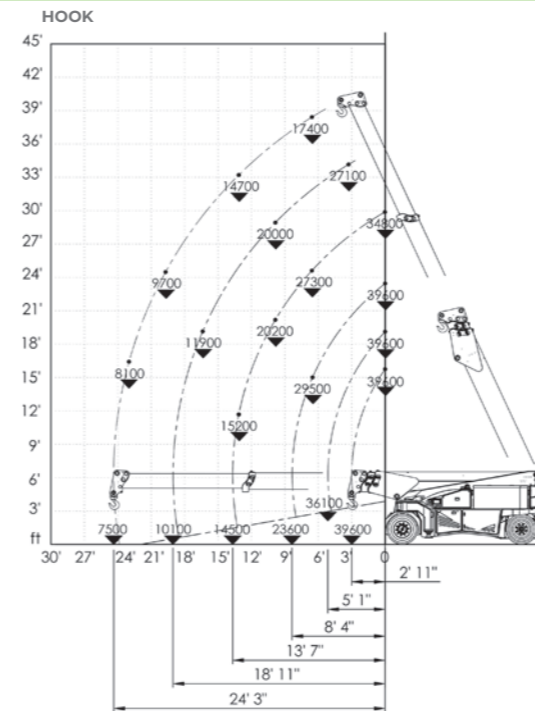


## Technical features

Max Capacity lbs	39,600
Dimensions inch	14'10"x6'6"x6'7"

Front-wheels drive. 2 electric motors AC 10 kW 96V Insulation class H	<b>LMI</b> Electronic safe load indicator and tilting moment limiter
Total lbs 47,700 Removable counterweights lbs 13,700	Automatic braking system on all wheels
96 V - 1035 Ah 8 working hours	Fabricated from preformed and welded quality steel plate
Front nr. 4 superelastic 355x50-20" Rear nr. 2 superelastic 355x50-20"	+65°/-6°
Rear Steering angle -90°/+90°	Motor driven pump 23 kW - 96 V AC, Insulation class H

## Load charts



## EU Standards CE

	UNI ISO 4030-1: A1
	2006/42/CE- 2000/14/CE -2014/30 UE 2014/35/UE - D.Lgs 262/2002 subsequent modifications
	EN 13000:2014 subsequent modifications

## Dimensions

