

Data subject to change without prior notice
Edition 03/2021 © 2021 JMG Cranes S.p.A. All rights reserved
Rev. 0 - 03/2021



Electric Pick & Carry Cranes

JMG Cranes S.p.A.
Sales & Service Office
Via Bergamo, 142
26100 Cremona - Italy
t +39 0372 1786738
Production Plant
Via Sito Nuovo 14
29010 Sarmato (PC) - Italy
t +39 0523 8486
e info@jmgcranes.com



MC 250.09FL (inch)
Max Capacity hydraulic forks
55,100 lbs@2,95ft

www.jmgcranes.com



MC 250.09FL

- REAR GROUP WITH TWO INDEPENDENT ROTATION GROUPS
- FRONT WHEELS DRIVE WITH COUNTERROTATION
- MAST FREE LIFT
- REMOVABLE COUNTERWEIGHTS
- REMOVABLE GROUP



Optionals:

- HYDRAULIC CRANE BOOM WITH ELECTRONIC SAFE LOAD INDICATOR AND TILTING MOMENT LIMITER
- NON MARKING TIRES
- RADIO REMOTE CONTROL
- ATEX CONVERSIONS
- CUSTOMIZED PAINTING

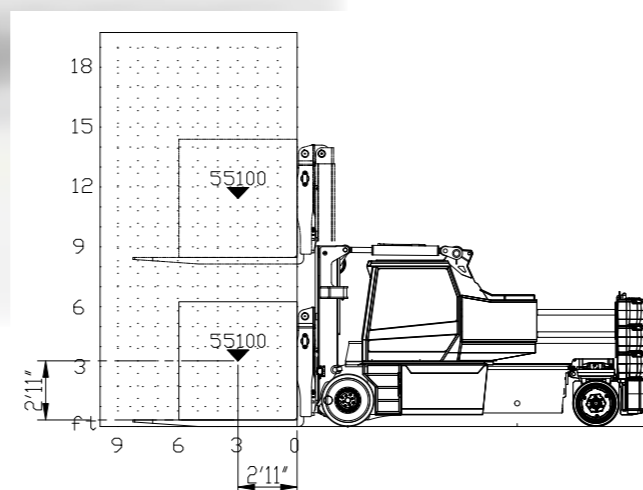
Technical features

Forks with open group	55,100 lbs@2,95ft
Forks with closed group	36,376 lbs@2,95ft
Dimensions	162,2x70,86x108,2 Inches

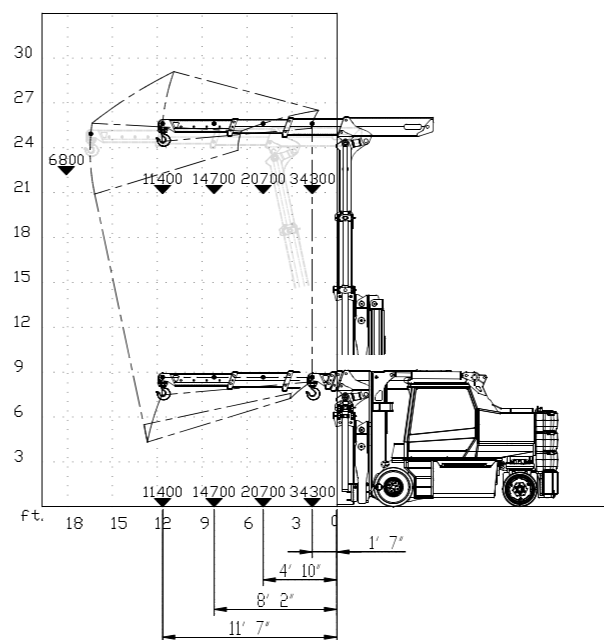
	Front-wheels drive. N°2 electric motors AC 12 kW 96V		Hydraulically foot controlled service brake on all wheels, hydraulically automatic or button controlled parking brake on front wheels.
	Total with forks lb 55100 Total with crane boom lb 55100 Weight support and fork length lb 6600 Crane boom weight lb 6600 Removable ballasts weight lb 13220		Fabricated from preformed and welded quality steel plate
	96 V - 1050 Ah		Mast angle inclination +12°-7°
	800x410 in polyurethane cushion rear wheels: nr 4 in cushion 28x10x22		N°1 electric motor AC 35kW 96V
	Rear		

Load charts

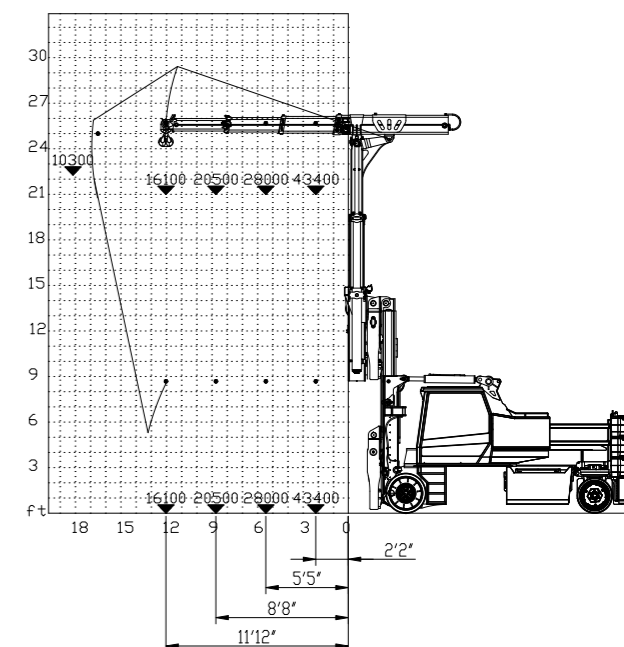
FORKS CAPACITY - ALL COUNTERWEIGHTS - OPEN GROUP



BOOM CAPACITY ON THE MAST - ALL COUNTERWEIGHTS - CLOSED GROUP



BOOM CAPACITY ON THE MAST - ALL COUNTERWEIGHTS - OPEN GROUP



EU Standards CE

	EN 13000:2014 ONLY HYDRAULIC BOOM. ASME B30.5-2014
	UNI ISO 3691-1983 IT UNI ISO 22915-2-2020 EN and subsequent modifications

Dimensions

