

Data subject to change without prior notice  
Edition 03/2020 © 2020 JMG Cranes S.p.A. All rights reserved  
Rev.1 - 03/20



# Electric Pick & Carry Cranes

## JMG Cranes S.p.A.

Sales & Service Office  
Via Bergamo, 142  
26100 Cremona - Italy  
t +39 0372 1786738  
Production Plant  
Via Sito Nuovo 14  
29010 Sarmato (PC) - Italy  
t +39 0523 8486  
e info@jmgcranes.com



**MC 450S (inch)**  
Max Capacity  
99,000 lb



[www.jmgcranes.com](http://www.jmgcranes.com)

# MC 450S

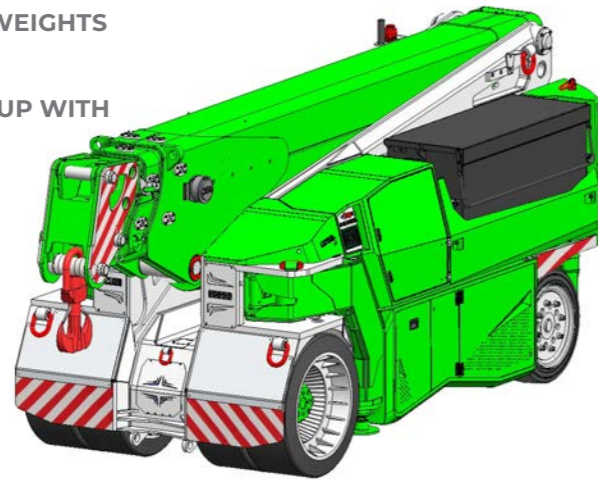
FRONT-WHEELS DRIVE WITH COUNTER ROTATION

HYDRAULICALLY TELESCOPING PROPORTIONAL TYPE BOOM

180° REAR STEERING

REMOVABLE COUNTERWEIGHTS

EXTENDIBLE REAR GROUP WITH REMOVABLE BALLASTS



### Options :

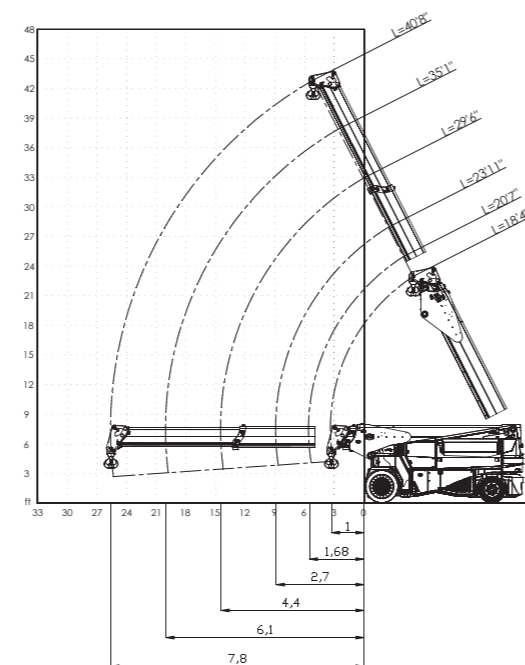
- HYDRAULIC WINCH
- HYDRAULIC JIB
- BENDABLE MANUAL JIB WITH MANUAL EXTENSION
- NON-MARKING TIRES
- FOLDABLE OUTRIGGERS
- HYDRAULIC FORKS
- MAN BUCKET
- ATEX CONVERSIONS
- CUSTOMIZED PAINTING



### Technical features

Max Capacity / lbs	99,000	Front-wheels drive. 2 electric motors AC 16 kW 96V. Insulation class H	LMI. Electronic safe load indicator and tilting moment limiter
	Dimensions / inch	16'29" x 7'2" x 7'11"	Total lbs 80,700 Removable counterweights lbs 23,320
Max Capacity / lbs		96 V - 1550 Ah 8 working hours	Automatic braking system on all wheels
	Dimensions / inch	Front nr. 4 superelastic 40x16-30" Rear nr. 4 superelastic 355/50-15"	Fabricated from preformed and welded quality steel plate
Max Capacity / lbs		Rear Steering angle -90°/+90°	+63,4°/-4,4°
	Dimensions / inch		Motor driven pump 1x35 kW - 96 V AC, 1x23 kW - 96 AC.

### Load charts



				Z1 Z3	Z2 Z4	
(lb)	18'4"	20'7"	23'11"	29'6"	35'1"	40'8"
0	99000	88000	84000	68000		
1'8"	99000	88200	83800	68300	52900	
3'3"	99000	88200	83800	66800	52900	37500
4'11"		80400	80900	61700	51800	37500
5'6"		73200	74100	60200	50000	37500
6'7"			64100	57300	46900	36400
8'2"			52700	53100	43000	34400
8'10"			48900	49600	41700	33900
9'10"				45000	39700	32800
11'6"				39000	36600	30200
13'1"				34200	34200	28000
14'5"				30600	31100	26200
14'9"					30400	25800
16'5"					27100	24000
18"					24500	22500
19'8"					22300	21200
20"					21800	20900
21'4"						19800
22'11"						18700
24'7"						17200
25'7"						16300

				Z1 Z3	Z2 Z4	
(lb)	18'4"	20'7"	23'11"	29'6"	35'1"	40'8"
0	99000	88200	83800	68300		
1'8"	99000	88200	83800	68300	52900	
3'3"	99000	88200	83800	66800	52900	37500
4'11"		88200	82700	61700	51800	37500
5'6"		79300	82000	60200	50000	37500
6'7"			80200	57300	46900	36400
8'2"			76900	53300	43000	34400
8'10"			66100	51800	41700	33900
9'10"				49600	39700	32800
11'6"				46300	36600	30200
13'1"				43400	34200	28000
14'5"				42100	32400	26200
14'9"					32000	25800
16'5"					30000	24000
18"					28200	22500
19'8"					26700	21200
20"					26400	20900
21'4"						19800
22'11"						18700
24'7"						17900
25'7"						17200



### EU Standards CE

	UNI ISO 4030-1: A1
	2006/42/CE- 2000/14/CE -2014/30 UE 2014/35/UE - D.Lgs 262/2002 subsequent modifications
	EN 13000:2014 subsequent modifications



### Dimension

